

# Electrothermal Analysis of Lithium Ion Batteries

**Ahmad Pesaran**

Andreas Vlahinos and Desikan Bharathan

National Renewable Energy Laboratory

Golden, CO, USA

ahmad\_pesaran@nrel.gov, Tel: 303 275-4441

**Tien Duong**

U.S. Department of Energy

Washington, D.C., USA



## THE 23rd INTERNATIONAL BATTERY SEMINAR & EXHIBIT

March 13 - 16, 2006

Fort Lauderdale, Florida

NREL/PR-540-39503

NREL is operated by Midwest Research Institute • Battelle 

### Disclaimer and Government License

This work has been authored by Midwest Research Institute (MRI) under Contract No. DE-AC36-99GO10337 with the U.S. Department of Energy (the "DOE"). The United States Government (the "Government") retains and the publisher, by accepting the work for publication, acknowledges that the Government retains a non-exclusive, paid-up, irrevocable, worldwide license to publish or reproduce the published form of this work, or allow others to do so, for Government purposes.

Neither MRI, the DOE, the Government, nor any other agency thereof, nor any of their employees, makes any warranty, express or implied, or assumes any liability or responsibility for the accuracy, completeness, or usefulness of any information, apparatus, product, or process disclosed, or represents that its use would not infringe any privately owned rights. Reference herein to any specific commercial product, process, or service by trade name, trademark, manufacturer, or otherwise does not constitute or imply its endorsement, recommendation, or favoring by the Government or any agency thereof. The views and opinions of the authors and/or presenters expressed herein do not necessarily state or reflect those of MRI, the DOE, the Government, or any agency thereof.

# Outline

---

- Introduction
- Approach (electrothermal modeling)
- Cells Analyzed
- Thermal Results
- Thermal Imaging
- Summary



# Introduction

---

- One of the goals of DOE/FreedomCAR program is to develop high-power, safe, long-lasting and affordable batteries for various hybrid vehicle applications, including the 42V mild hybrids.
- With cost sharing from DOE/FreedomCAR, United State Advanced Battery Consortium (USABC) contracted Saft to develop a high-power, low-cost battery to meet the FreedomCAR technical targets for 42V M-HEV batteries (2003-2005).
- With support from DOE, NREL performed thermal analysis and testing for understanding and, if needed, improving thermal performance of cells supplied by the USABC program.



# Description of Cells and FreedomCAR/USABC Goals

## Features

- Very high power
- High energy density
- Maintenance free
- Long cycle life (over 1 million HEV shallow cycles)
- Projected 10 to 15 years calendar life.

## Applications

- High power hybrid vehicles
- Any application requiring very high pulse power capability

## Technology

- Graphite-based anode
- Nickel oxide-based cathode
- Electrolyte: blend of carbonate solvents + LiPF<sub>6</sub>

The latest Saft prototype cells meet most of the USABC/FreedomCAR performance goals.

## USABC/FreedomCAR 42 V Energy Storage System End-of-Life Performance Goals

Characteristics	USABC Goal
Discharge Power (kW/2 sec.)	13
Regenerative Power (kW/2 sec.)	8
Engine-Off Accessory Load (kW/5 mm)	3
Available Energy (Wh at 3 kW)	300
Recharge Rate (kW)	2.6
Efficiency Load Profile (%)	90
Cycle Life, Miles/Profiles (Engine Start)	150K (450 K)
Load Profile	Partial Power Assist
Cold Cranking at -30°C/21V (kW)	8 → 3
Calendar Life (Years)	15
Maximum System Weight (kg)	25
Maximum System Volume (l)	20
Selling Price (\$/System at 100 K/Year)	260
Maximum OCV After 1 Sec. (Vdc)	48
Minimum Operating Voltage (Vdc)	27
Self-Discharge (Wh/Day)	Less than 20
Maximum Cell $\Delta$ T (°C)	N/A
Operating Temperature (°C)	-30 to +52
Survival Temperature (°C)	-46 to +66

5



## Objectives of This Work

### General

- Develop an electrothermal process/model for predicting thermal performance of real battery cells and modules.
- Use the electrothermal model to evaluate various designs to improve battery thermal performance.

### This Study

- Use electrothermal model to predict the thermal behavior of two cell design iterations to identify improved thermal performance.
  - Design A: Saft Li-Ion Cylindrical with terminals on opposite sides.
  - Design B: Saft Li-Ion Cylindrical with terminals on the same side.

6



# Motivation for the Thermal Analysis Work

- Temperature greatly affects the performance and life (and thus warranty costs) of batteries.
- Battery thermal control/management is a must for hybrid electric vehicles under real driving conditions.
- Good battery pack thermal management starts with cells and modules that perform well thermally.
- Thermal modeling and simulation could aid in designing batteries with better thermal behavior.
- A 3-D model capturing electrical, as well as thermal behavior of batteries with real geometries and details including the non-electrochemical parts, was needed.

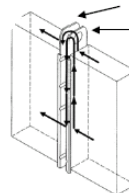
7



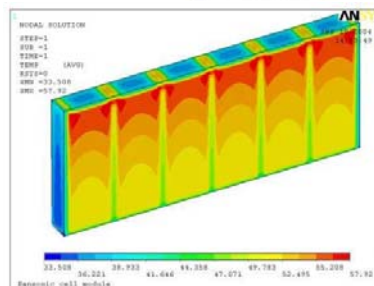
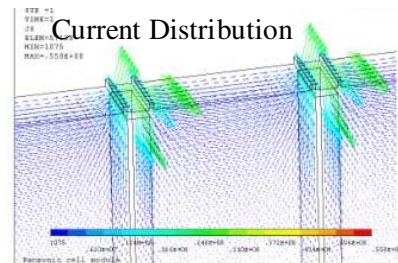
## Analysis Approach

- Capturing details of a cell including non-electrochemical hardware with Finite Element Analysis.
- Estimating resistances of each component/part using geometry, materials, and test data.
- Applying voltage drop to calculate current density in components.
- Estimating resistive heating ( $I^2R$ ) in each component.
- Applying electrochemical heat of reactions in the core (active parts).
- Applying heat transfer boundary conditions on cell exterior.
- Predicting temperature distribution in the cell from current density and related heat generation distribution.

Example: 6-cell Panasonic NiMH module



Two cells with an interconnect

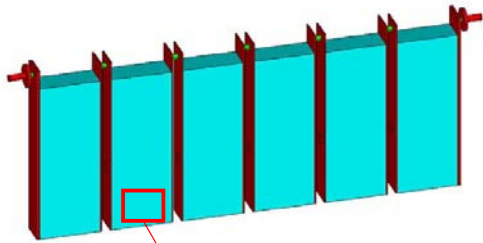


8

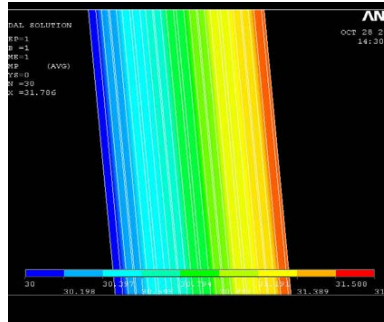
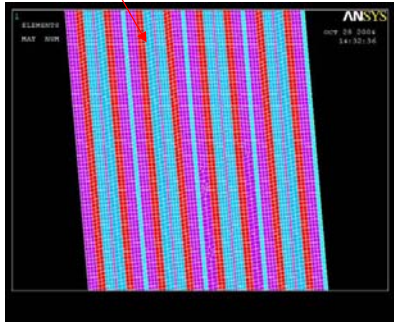
Temperature Distribution



## Approximating Core/Winding Material



It's assumed that the core material (electrochemically active part) consisted of a homogenous material with average properties for resistivity and thermal conductivity, but with different properties in different directions (orthotropic xyz or rθz)



$$k_x = q * \Delta x / \Delta T$$

$$k_y = q * \Delta y / \Delta T$$

or

$$k_z = q * \Delta z / \Delta T$$

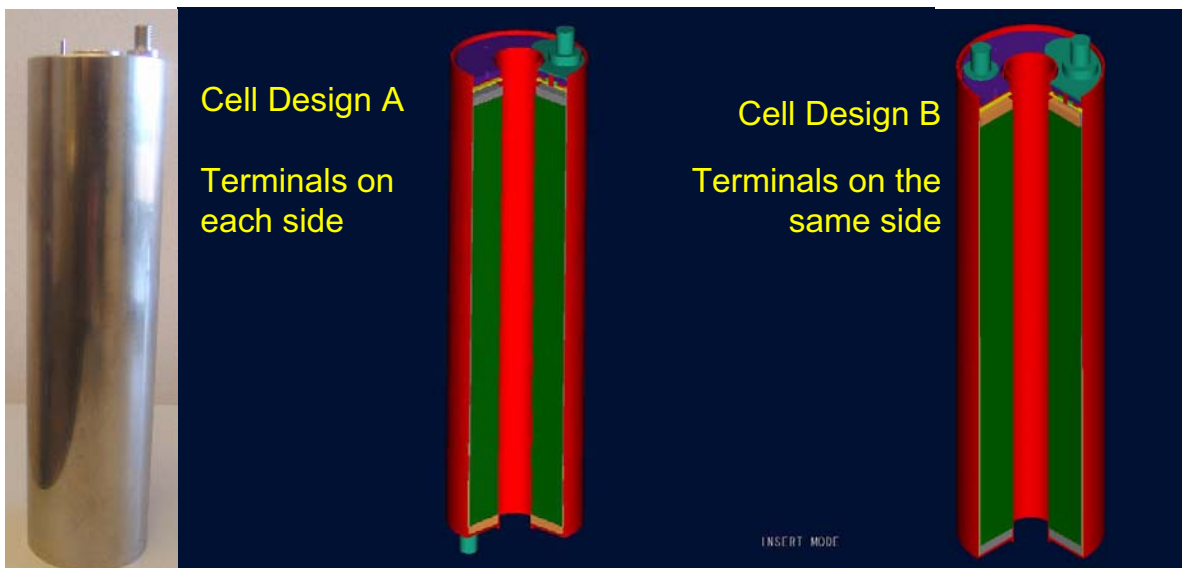
$$k_r = q * \Delta r / \Delta T$$

Used finite element analysis to calculate the effective thermal conductivity in each direction.

9



## Physical Description of Cells Studied



Cell Design A

Terminals on  
each side

Cell Design B

Terminals on the  
same side

Captured essential details of Cell Designs A and B

10



# List of Assumptions and Approach

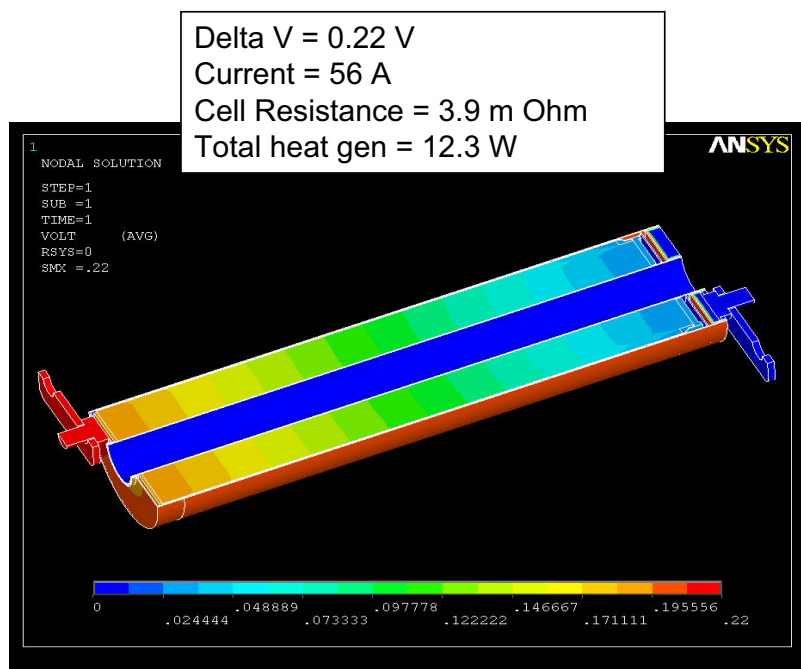
- Captured all geometry and material properties
  - All electrical resistivities from literature except for electrolyte/separator
  - Used experimental DC resistance of the cell to calculate resistivity of the winding
- Air cooling on all exterior surfaces
- Heat transfer film coefficient on all surfaces = 40 W/m<sup>2</sup>K
- Initial battery and air temperature = 35°C
- Target heat generation 12 W (based on heat generated under HPPC profile with HP12 LC cells at NREL calorimeter)
- Applied a voltage drop across the terminals; a current was created based on the electrical resistance of the cell.
- Voltage drop was adjusted so heat dissipation in the cell would be order of 12W.

$$\Delta V = I * R \quad \text{Heat Power} = I * \Delta V = R * I^2$$

11



## Voltage Distribution – Cell Design A



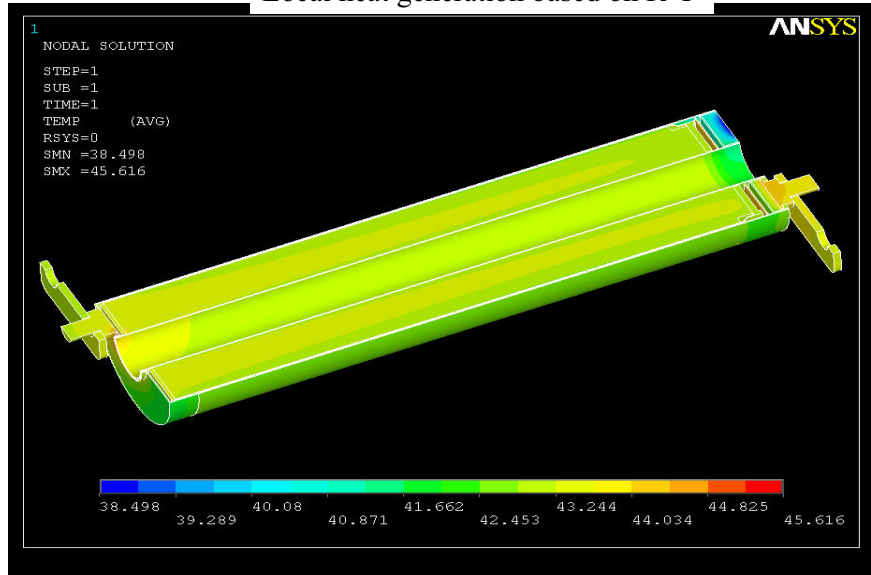
12



# Temperature Distribution – Cell Design A

Total heat gen = 12.3 W

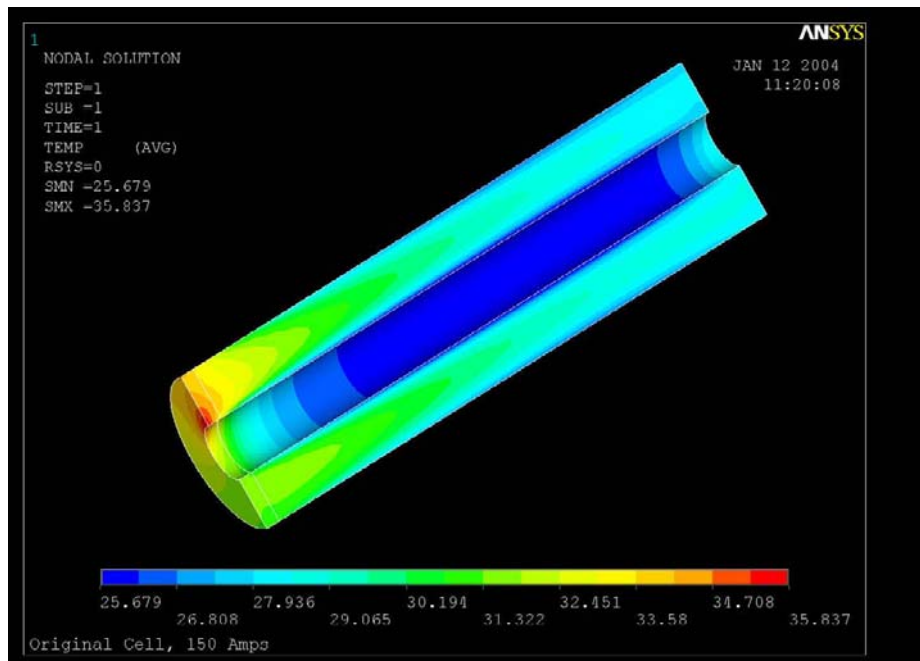
Local heat generation based on  $R \cdot I^2$



13



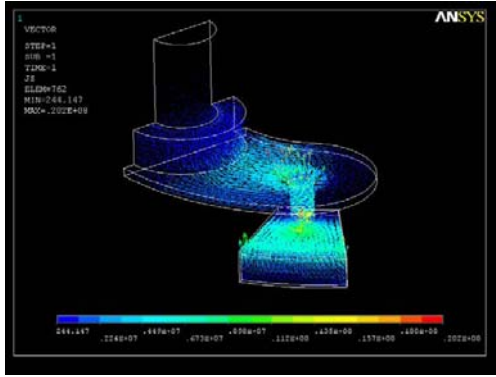
# Temperature Distribution in Winding Only Cell Design A



14

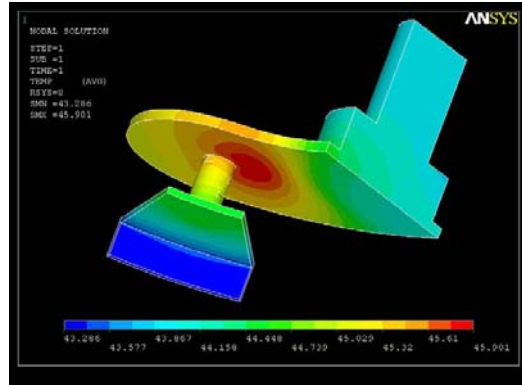


# Results for Cell Design A (near +ve terminal)



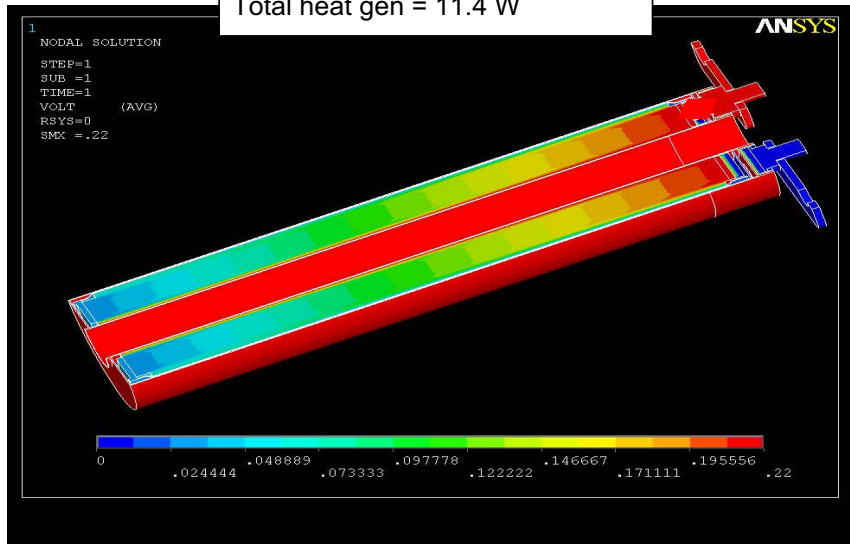
Current Density Distribution

## Temperature Distribution



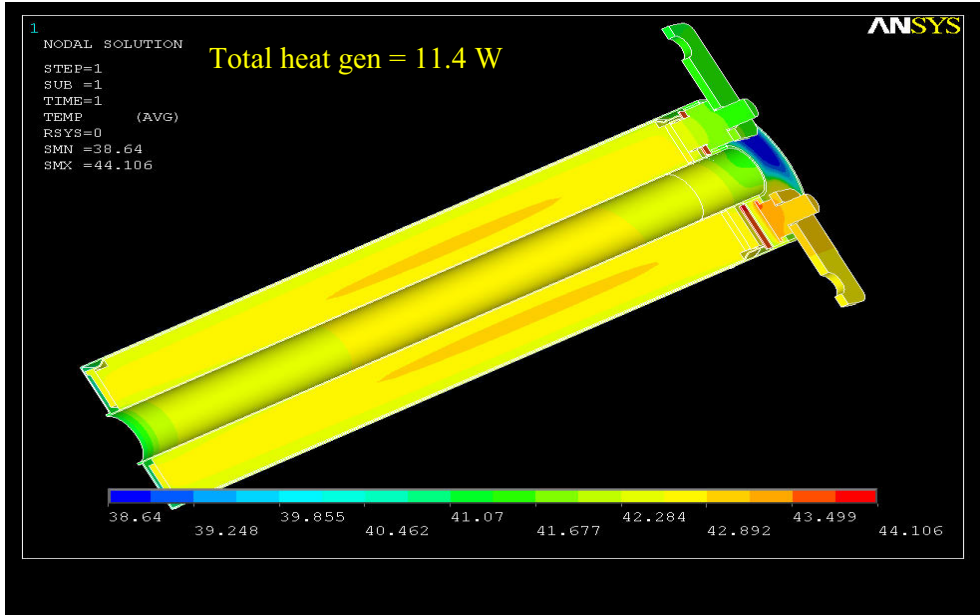
# Voltage Distribution – Cell Design B

Delta V = 0.22 V  
Current = 52 A  
Cell Resistance = 4.23 m Ohm  
Total heat gen = 11.4 W





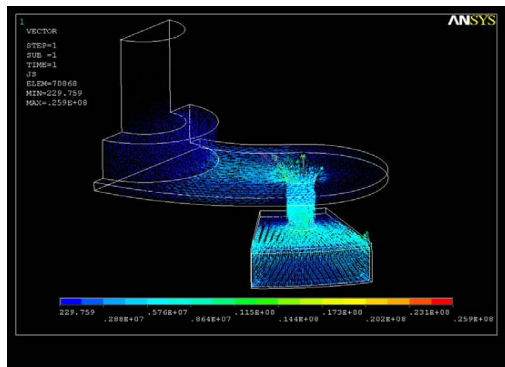
# Temperature Distribution – Cell Design B



17

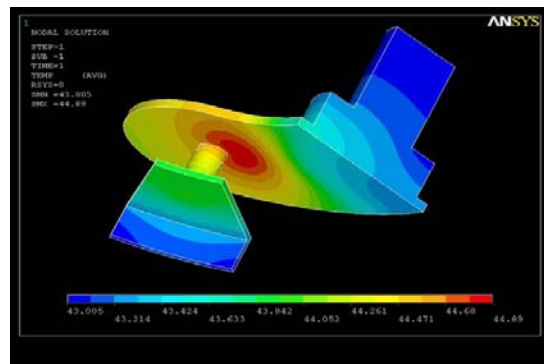


## Results for Cell Design B (near +ve terminal)



Current Density Distribution

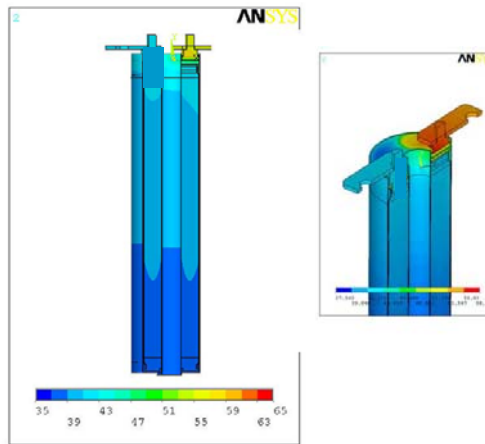
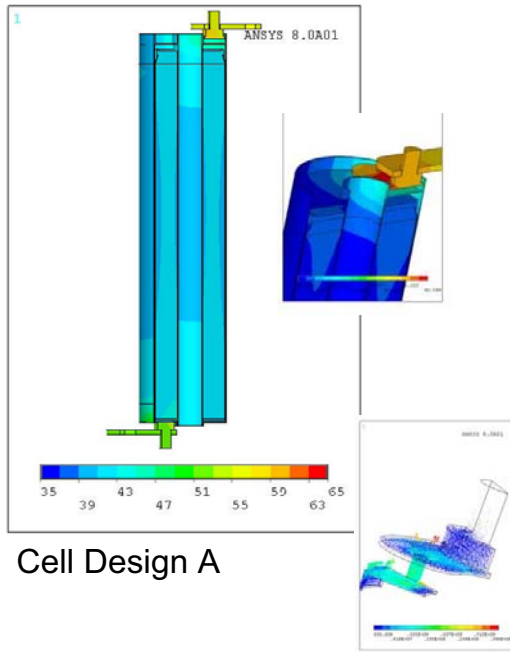
## Temperature Distribution



18



# Steady-State Results under “Average” of 110 Amp Load



19



## Transient Analysis

Using P-HEV Heat Rejection Profile from FreedomCAR 42V Test Manual

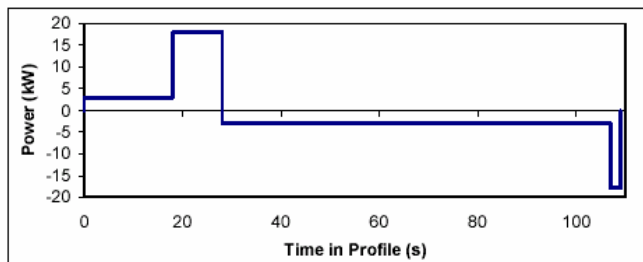
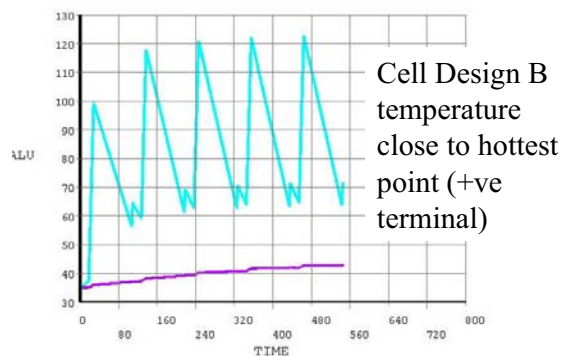
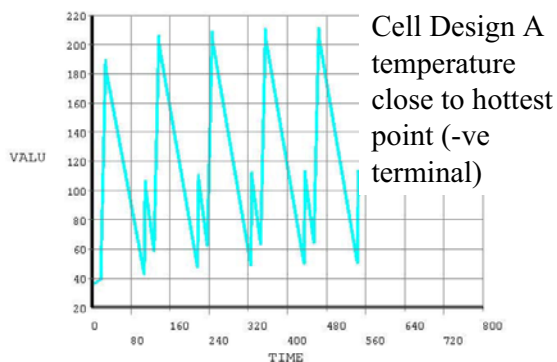


Figure 7. Heat Rejection Test Profile

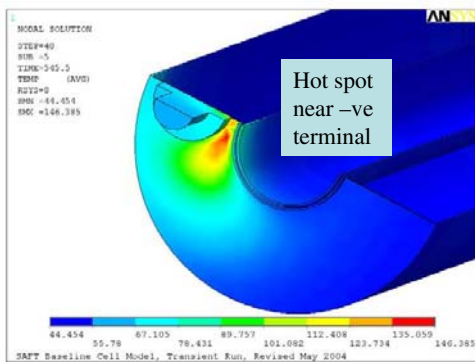
Time (s)	Equivalent Current (A)
18	70
10	480
79	67
2	400



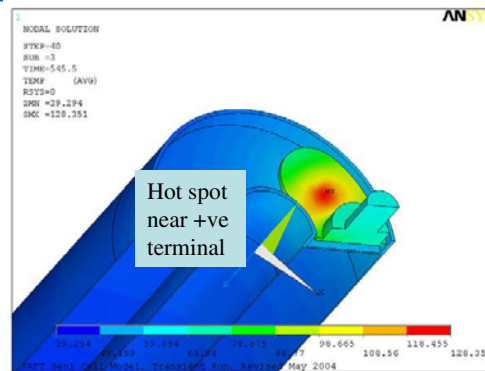
20



# Cell Design A Exhibits Hotter Points near Terminal under the High Current Transients



Hottest spots in Cell Design A after 5 heat rejection test profiles



Hottest spots in Cell Design B after 5 heat rejection test profiles

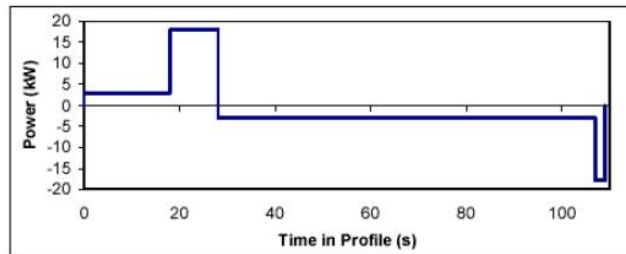


Figure 7. Heat Rejection Test Profile  
21



## Summary of Electrothermal Analysis of Cells

Temperature (°C)	Cell Design A			Cell Design B		
	110 Amps	166 Amps	5 cycles of Table 3	110 Amps	166 Amps	5 cycles of Table 3
Maximum Hardware	60	93	146	58.1	88	128
Maximum Winding	43	53	66	42	50	48
Average Winding	~ 41	~ 49	~ 47	~ 39	~ 45	~ 44

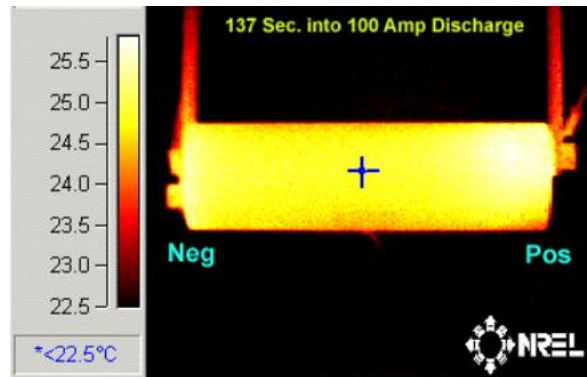
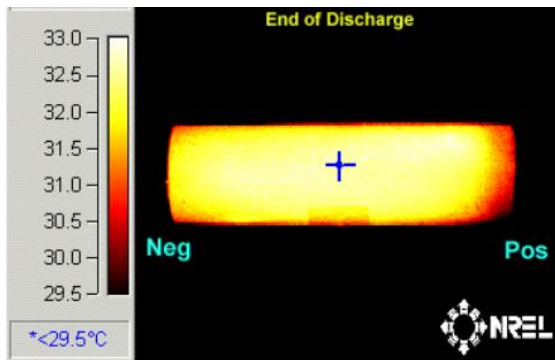
- The overall resistance of Cell Design B is less than Cell Design A.
- Under the same current profile, Cell Design B generates less heat and thus performs better thermally.



# Thermal Imaging of Li-Ion Cells Confirms the Trends of Electrothermal Model



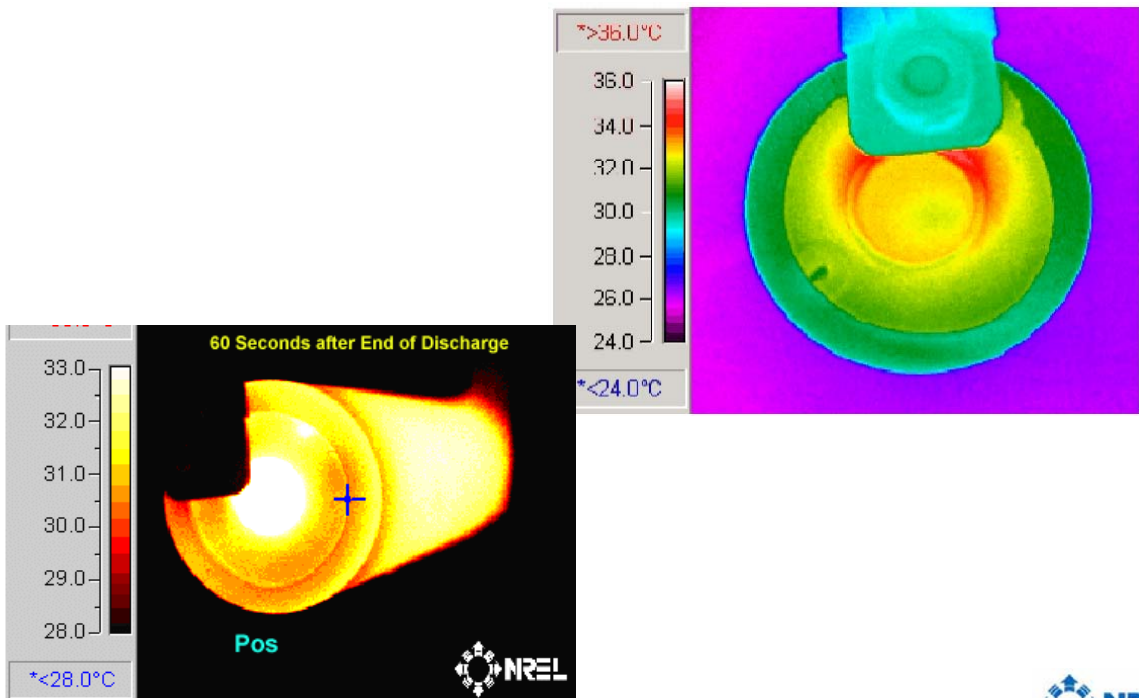
Thermal Imaging of a Saft Cell under 100 Amp Discharge



23



## Thermal Imaging Showed Hot Spots near -ve Terminal for Cell Design A



24



# Summary and Observations

---

- Developed an electrothermal modeling process for analyzing thermal performance of cells and batteries.
- The electrothermal model was used to evaluate thermal performance of two Li-Ion cylindrical cells.
  - The Cell Design A had a less favorable thermal performance under P-HEV transient heat rejection profile (hottest point near the negative weld).
  - The hottest point in Cell Design B was in the positive terminal.
  - The winding in Cell Design B was cooler than Cell Design A under the same current profile due to its lower resistance.
  - The trends of the electrothermal analysis were similar to the experimental thermal imaging results.
- The electrothermal analysis is a valuable tool for enhancing thermal and thus electrical performance and cycle/calendar life of Li-Ion batteries.

25



# Acknowledgments

---

- DOE and FreedomCAR Program Support
  - Dave Howell
- USABC Technical Guidance
  - Bruce Blakemore



26

